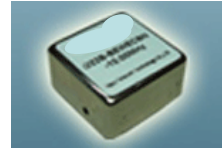


LEADED TYPE OVEN CONTROLLED CRYSTAL OSCILLATORS
 (Rohs Compliant / Lead Free)
OCXO 25x25mm (AP-OCXO25B Series)

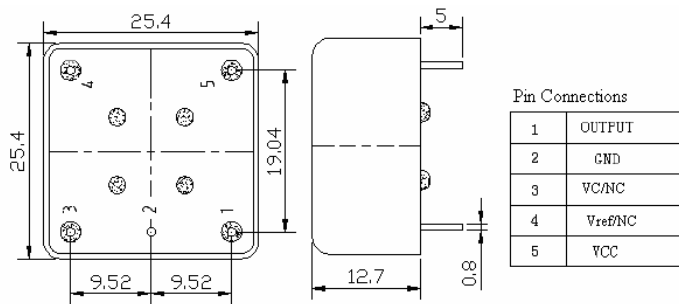


- SPECIFICATIONS

| | AT CUT CRYSTAL | | | SC CUT CRYSTAL | | |
|--|--|------------------------|------------------------|---|------------------------|------------------------|
| FREQUENCY RANGE | 1.25MHz TO 40MHz | | | | | |
| FREQUENCY STABILITY | $\pm 2.5 \times 10^{-7}$ | $\pm 1 \times 10^{-7}$ | $\pm 5 \times 10^{-8}$ | $\pm 2 \times 10^{-8}$ | $\pm 1 \times 10^{-8}$ | $\pm 5 \times 10^{-9}$ |
| OPERATING TEMPERATURE | -40~+80°C | -30~+70°C | 0~+60°C | -40~+80°C | -30~+70°C | 0~+60°C |
| STORAGE TEMPERATURE RANGE | 1E-10 / sec | | | 1E-11 / sec | | |
| OUTPUT WAVEFORM | HCMOS / TTL / Sine 0 to +7dBm (Low voltage CMOS Available) | | | | | |
| RISE AND FALL TIME | 6nS MAX. (HCMOS, 10%~90%V out, 90%~10%V out) | | | | | |
| FREQUENCY STABILITY VS LOAD CHANGES | ± 0.01 ppm Max for $\pm 5\%$ change | | | ± 0.003 ppm Max for $\pm 5\%$ change | | |
| FREQUENCY STABILITY VS SUPPLY CHANGES | ± 0.015 ppm Max for $\pm 5\%$ change | | | ± 0.002 ppm Max for $\pm 5\%$ change | | |
| FREQUENCY STABILITY VS AGING | ± 4 PPM/10 YEAR MAX, ± 5 PPM/DAY MAX. | | | ± 0.3 PPM/10 YEAR MAX, ± 0.5 PPM/DAY MAX. | | |
| SUPPLY VOLTAGE, NOM. | 12V, 5V, 3.3V (OPTIONAL) | | | | | |
| POWER DISSIPATION STEADY STATE | 1.5W MAX. | | | | | |
| HEAT UP POWER | 4W MAX. | | | | | |
| HEAT UP TIME | 3MIN. MAX. | | | | | |
| DUTY CYCLE | 40% ~ 60% (HCMOS) | | | | | |
| PHASE NOISE | OFFSET | PHASE NOISE | OFFSET | PHASE NOISE | OFFSET | PHASE NOISE |
| | 10Hz | -90dBc/Hz | 10Hz | -115dBc/Hz | 10Hz | -115dBc/Hz |
| | 100Hz | -125dBc/Hz | 100Hz | -135dBc/Hz | 100Hz | -135dBc/Hz |
| | 1000Hz | -135dBc/Hz | 1000Hz | -145dBc/Hz | 1000Hz | -145dBc/Hz |
| | 10000Hz | -150dBc/Hz | 10000Hz | -155dBc/Hz | 10000Hz | -155dBc/Hz |
| PULLING | N: No frequency adjustment D: ± 4 ppm (TYPICAL) | | | D: Frequency adjustment D: ± 0.5 ppm (TYPICAL) | | |

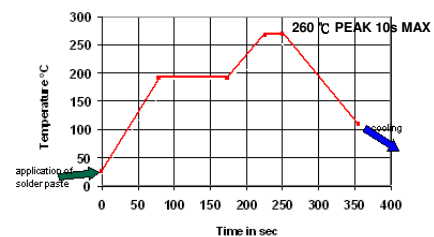


- OUTLINE DIMENSIONS



Unit: mm

- SOLDER REFLOW PROFILE



| ORDERING CODE SYSTEM (VERSION 1.1 UPDATED MAY 2008) | | | | EXAMPLE: |
|---|---|-----------|---------------|--------------------|
| SERIES | STABILITY | FREQUENCY | INPUT VOLTAGE | AP-OCXO25B1-40-3.3 |
| AP-OCXO25B | 1: $\pm 1 \times 10^{-8}$, 10^{-7} 2: $\pm 2 \times 10^{-9}$ 25: $\pm 2.5 \times 10^{-7}$ 5: $\pm 5 \times 10^{-9}$, 10^{-8} | IN MHZ | 3.3 | |

NON STANDARD FREQUENCIES AND SPECIFICATIONS ARE AVAILABLE ON REQUEST

| | | | | | |
|--|----------------------------------|---|--|--|--|
| ActPro Ltd. (APX-Crystal) PROREP EDGE Meditronics PTE Ltd. | HONG KONG FRANCE SINGAPORE | Email: sales@apx-crystal.com Email: sales@prorep.fr Email: sales@edgemeditronics.com.sg | Internet: www.apx-crystal.com Internet: www.prorep.fr Internet: www.edgemeditronics.com.sg | Tel: 852-3625 2368 Tel: 33-1-4812 1736 Tel: 65-6455 0521 | Fax: 852-2633 8503 Fax: 33-1-4812 1739 Fax: 65-6455 0857 |
|--|----------------------------------|---|--|--|--|

Specifications are subject to change without notice